



Non-Profit Organization
U.S. POSTAGE
PAID
Permit No. 562
Honolulu, HAWAII

560 North Nimitz Hwy
Suite 218
Honolulu, Hawaii 96817

OUR MISSION IS TO SUPPORT AND IMPROVE THE QUALITY AND
AVAILABILITY OF CARE FOR THE YOUNG PEOPLE OF HAWAII.

Voted "Hawaii's Best Child Care Referral Service" for 7 years in a row by readers of Honolulu Family Magazine



2018 Annual Report printed as a community service by **RICOH**

2018 ANNUAL REPORT



THE
SKY'S
THE LIMIT!



PATCH
Supporting Hawaii's Child Care Needs



AFFILIATIONS:



AWARDS:



PRESIDENT'S MESSAGE

Aloha,

The theme of this year's report is, "The Sky is the Limit". This speaks to the future we want to provide all children and the how PATCH is hard at work to make this possible.

If we want to help children reach their potential, we need to look at where they start and the trajectory of their development. The research on brain development clearly establishes that the ages from 0 to 5 are of critical importance to the development a child's physical, social, emotional and intellectual development.

Since its founding in 1976 PATCH has been dedicated to the purpose of providing quality childcare to young children so that they can reach their potential. This report illustrates how PATCH is continuing to serve this purpose, in measurable data and in the personal testimony of how PATCH touches people's lives.

More than a story of lofty ideals, the PATCH story is about the small steps the staff, volunteers, service providers and parents in the PATCH Ohana take on every day, often behind the scenes, to add up to making a big impact. This is the story of:

First Steps: PATCH identifying an unmet need in the community to help homeless children, without much funding or support, and starting anyway. That small, bold step has attracted ever growing support to continue helping homeless families connect with many community services.

Grit and Persistence: PATCH addressing an increasingly challenging environment for childcare providers and continuing to find ways to support them. By observing the need for childcare increasing and the number of childcare providers decreasing, PATCH continues to work towards improving the regulatory climate, create incentives, training and other programs to change this equation.

Innovation: PATCH is dedicated to investing in technology internally to streamline operations as well as externally to make training more accessible to care providers and families.

Community: PATCH advocating to government stakeholders, the early childhood community and other non-profits. PATCH works to pool resources so that more effort can be spent directly serving children and the network that surrounds them.

Compassion: PATCH supporting Navy and Air force families with "exceptional family members" by offering them a few precious hours of respite to recharge from their incredibly demanding responsibilities. As they will tell you, those few hours can make all the difference

We are grateful for the dedication and hard work of the families, childcare givers, staff, volunteers and board members in the PATCH community. It has been a very challenging but successful year PATCH. I am amazed at what the PATCH Ohana has achieved with limited resources and I am grateful to have been witness firsthand the PATCH secret to success. The PATCH community truly believes in the work they are doing.

Mahalo,


Ryan Yamamoto



PARTNERS

Aloha United Way
Baby Friendly/Breastfeeding Task Force
Baby S.A.F.E.
Baby STEPS
Child & Family Service, Head Start
Child Care Aware
Child Care Business Coalition
Collaborative Leaders Network
Department of Health
Department of Human Services
Department Of Education
Early Childhood Education
Comprehensive System
E. Hawaii Coalition for Prevention
of Abuse & Neglect
East Hawaii Perinatal Consortium
Easter Seals Hilo
Executive Office on Early Learning
Family Support Hawaii, Early Head Start
HIAEYC
Hawaii Children's Action Network
Hawaii Island United Way
YWCA Developmental Preschool
Honolulu Community College
Hui Kilo Pohaku
IMUA Family Services
Ka Hale O Na Keiki
Kamehameha Schools
Kauai Community College

Kauai Dental Task Force &
Breastfeeding
Kauai Keiki Care Provider Association
Kauai Planning & Action Alliance
Kauai STEPS
Kauai United Way
KCAA Preschools of Hawaii
KELP
Kai I Ka Ike
Learning to Grow
Maui Community College
Maui Economic Opportunity Head start
Maui Family Support Services, Early
Head Start
Medical Home Works
Mikiala Early Screening Program/PACT
National Registry Alliance Workforce
Parent Educators Networking
Prevent Child Abuse & Neglect
Leadership Team
Read to Me International
Safe Sleep Committee
Samuel N. & Mary Castle Foundation
Sequenced Transitions to Education in
the
Public Schools (STEPS) Statewide
Strengthening Keiki of Incarcerated
Parents Partnership (SKIPP)

Tutu & Me Traveling
Preschool
University of Hawaii at
Manoa
University of Hawaii at
Hilo
Windward Community
College
YWCA Kauai

THANK YOU TO THE MANY CARING INDIVIDUALS AND COMPANIES THAT DONATED IN-KIND
ITEMS TO PATCH IN 2018. YOUR SUPPORT HELPS US TO IMPROVE KEIKI'S LIVES IN HAWAII.

Report reflects donations as of December 31, 2018. In the preparation of this report, we try to avoid errors and omissions Please accept our
apologies in advance if any are found and contact us for corrections.



BOARD OF DIRECTORS

Ryan Yamamoto, PRESIDENT
Deborah Ng-Furuhashi, VICE PRESIDENT
Abe Toma, TREASURER
Cara Tanimura, SECERETARY
Jondi Kapualani Anderson
Scott Fujieda
Antonia Fujimoto
Shayna Hayashi
Suan Masumoto-Nonaka
John P. Miller, Jr.
Cheryl Nishita
Mia Noguchi
Liane Nomura-Siu
Laura Sakai
John Tapper
David Todani
Kerstan Wong
Sophia Wong

CHAMPIONS

First Hawaiian Bank
Serveco Foundation
McDonald's Restaurants
of Hawaii, Inc.
German Benevolent
Society of Honolulu
American Savings Bank
Bank of Hawaii
Walmart Foundation
Central Pacific Bank
Hawaii Hotel Industry
Foundation
Maui County
Oahu Visitor Industry
Charity Walk
Kosasa Foundation
Kahuku Community Fund
Annie Sinclair Knudsen Memorial
Fund
The Rev. Takie Okumura Family Fund
Robert C. & Helen Nichols Fund

MEMBERS

Alphabetland Preschool, LLC
David Todani
Kamehameha Schools
Ryan Yamamoto
Cheryl Nishita
Jasmine Fontanilla
Sounds of Success
Preschool
Sina Mauga
Susana Ermitano
Lorraine Shimauchi
Helene Kuwaye
Susan Ing
Mia Noguchi
Susana Ermitano
Beth Okamura
Helene Kuwaye
Todd Yamanaka
Susan E. Shim
Zibeth Hada
Chavelle Montalbo
Lialoha A B Snyder
Na Maka Kindergarten
Prep School

CORPORATIONS & FOUNDATIONS

ANGELS \$1000+

Giving Bracelets

BENEFACTORS \$500—\$999

Clair Mason

SUPPORTERS \$100—\$499

Deborah W.L.M.Q. Ng-
Furuhashi
Jennifer Bagoyo
Keike Care Center of Hawaii
Stepping Stones Academy
Sounds of Success Preschool
Haylee Faustin
Flatbread Company
Lotus Pond Communications
Todd Yamanaka

FRIENDS \$1—\$99

Glenn & Cindy
Magasang
Paul & Carol Marx
Assure Childcare
Hyrum Siverly
Lovena & Charles
Davis
Rosie Batallones
Aqueelah Seilz
Myrna Mazzola
Zeza
California Pizza
Kitchen
Ashley Rapozo
Thea Matsuda
Jason Fender
Jie & Gordon Zanel
Jennifer Brooks
Susie Shim
Lois K.Y. Ing
Virginia Lord
Jennifer Zoe
Brooks
Lorin Bettencourt
Bradley Punu
Nadine Wasada
Meleke & Clara
Leasau

Financials

	2018	2017
Revenue and Support		
Government Grants & Contracts	\$3,483,927	\$3,246,285
Unrestricted Contributions	62,061	40,387
Program Fees	42,220	62,092
Contributions from United Way	26,077	22,751
Other Contributions	12,532	19,625
Released From Restrictions	8,126	15,789
Other Income	11,862	14,397
Total Revenue and Support	3,646,805	3,421,326
Expenses		
Child and Adult Care Food Program	1,324,680	1,368,227
Other Child Care Services	705,354	463,131
Child Care Training	518,837	546,737
Preschool Open Doors	452,853	457,558
Resource and Referral Program	305,196	284,006
Management and General	383,700	354,457
Fundraising	307	210
Total Expenses	3,690,927	3,474,326
Increase in unrestricted net assets	(44,122)	(53,000)
Temporarily Restricted Contributions	8,324	7,173
Released From Program Restrictions	(8,126)	(15,789)
Increase (Decrease) in Temporarily Restricted Net Assets	198	(8,616)
Increase in Net Assets	(43,924)	(61,616)
Net Assets End of Year	\$ 855,646	\$ 899,570



90%
Program
Services

10%
Admin.

What Did We Do?





VERIFIED CREDENTIALS OF **4,678**
PRESCHOOL CENTERS WORKERS
102 PEOPLE RECEIVED IN-PERSON
COUNSELING
\$64,347.79 HELPED **113**
PEOPLE TAKE COLLEGE COURSES IN
EARLY CHILDHOOD EDUCATION
HELPED MORE THAN **200** FAMILIES
FIND NEEDED SERVICES TO
INCLUDE: MEDICAL, DENTAL, LEGAL,
EDUCATION & NUTRITION SERVICES
PROVIDED QUARTERLY SITE
VISITS TO MONITOR THE
HEALTH AND NUTRITION OF
MEALS SERVED BY **263**
CHILD CARE PROVIDERS
CARING FOR **1,664**
KEIKI AND PAID **\$1,066,796**
IN SUBSIDIES FOR SERVING
640,358 MEALS!

DEPARTMENT OF HEALTH HOME
VISITING TRAINING INSTITUTE
OFFERED **71** CLASSES, IN WHICH
361 PEOPLE ATTENDED
\$10,457,340
STATE-FUNDED TUITION
ASSISTANCE HELPING **1,745**
AT-RISK CHILDREN ATTEND
PRESCHOOL
564
PEOPLE ASSISTED TO START A FAMILY
CHILDCARE HOME BUSINESS.
26
RECRUITS BECAME
LICENSED
156
NEW CHILDCARE SPACES CREATED
5,143
PARENTS AND EARLY EDUCATION
PROFESSIONALS ATTENDED **1,522**
HOURS OF FREE TRAINING

CHILD CARE REFERRAL REQUESTS=
9,522

Age range	preschool & center based	family child care home
0-18 months baby:	\$14,328	\$8,640
2-3 year old child:	\$10,658	\$8,364
3-4 year old child:	\$8,928	\$8,316



	 FAMILY CHILD CARE HOMES	 PRESCHOOLS	 INFANT/TODDLER CENTERS	 BEFORE/AFTER SCHOOL PROGRAMS
HILLO:	43	38	2	6
KONA:	25	24	5	4
KAUAI:	31	29	0	4
MAUI:	59	55	10	5
MOLOKAI:	1	6	0	0
OAHU:	167	270	51	56
TOTALS:	326	423	68	75

IN THEIR OWN WORDS...

Just a few examples of what the people
we help have to say.

Respite Program

"Greetings, I hope this finds you well...Also, I do not know if you all do report cards for the providers or take feedback but I wanted to put in on record that from my observation and that of my wife, Terri is one of the best child care providers we have encountered to date. She obviously cares not only about taking care of the children, but about our family and it shows in her every interaction. We have 4 children and life can get hectic so having someone like Terri help us has just been a tremendous help to our sanity. We are so grateful for her and for Respite! Thanks!"

~Justin J. Bugliesi, SA, USAF
AFOSI Region 6/CF, JBPHH, HI

"Thank you to you and the entire PATCH program. We had such an amazing experience with the caregivers you provided and will miss them VERY much! Ms. Jacinda made us feel like family (which is amazing when you are far from your own family) and looked after Elijah as if he was one of her own. She was so energetic and Elijah always looked forward to the next day she came.

We appreciate everything!"
~Aaron & DeAnne Weathers

Career Counseling

"The reason I wanted to thank you personally is because I know it's individuals and programs such as yourself & PATCH that make positive significant impacts for our families. I wanted to recognize how truly thankful and appreciative I am."

~Cherry Tom

"I have truly enjoyed my connection with the patch staff and the classes they have offered to our staff for recurrent training in childcare education. I appreciate your time and support thru the past ten years and I treasure our friendship.

Much aloha~"

~Cindy Naomi Nagaoka

Preschool Open Doors

"I just wanted to express my sincere gratitude. Honestly, I can't thank you enough. I have never ever received any type of subsidy before so I really appreciate this one time opportunity. In fact, since I now have childcare, I just applied for a full-time teaching position. Mahalo for helping to create these opportunities for my daughter and me."

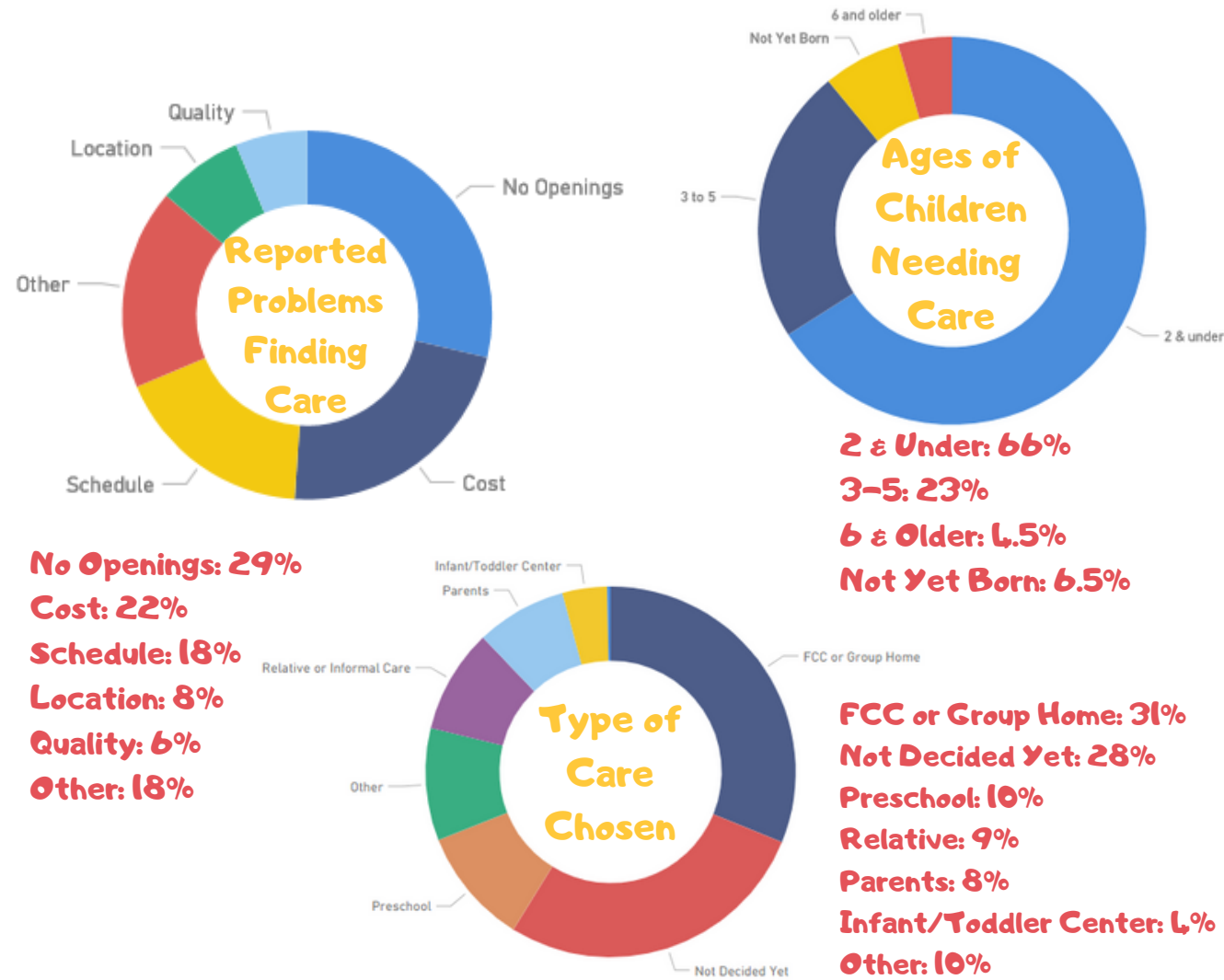
~Anonymous





CHILD CARE IN HAWAII 2018

THE MAJORITY OF INQUIRIES TO PATCH FOR CHILDCARE WERE FOR CHILDREN AGE 2 AND YOUNGER. MOST FAMILIES HAVE DECIDED ON A FAMILY CHILD CARE HOME, WITH COST AND LACK OF AVAILABILITY REMAINING THE LARGEST OBSTACLES TO FINDING CARE.



Who Did We Help?



92% of keiki were under 5 years old.

43% of children in low-income families live with a single parent.



Age



<19 year olds 3%
20-29 year olds 39%
30-39 year olds 47%
40-49 year olds 10%
50+ year olds 4%

82%

of those seeking PATCH services were women

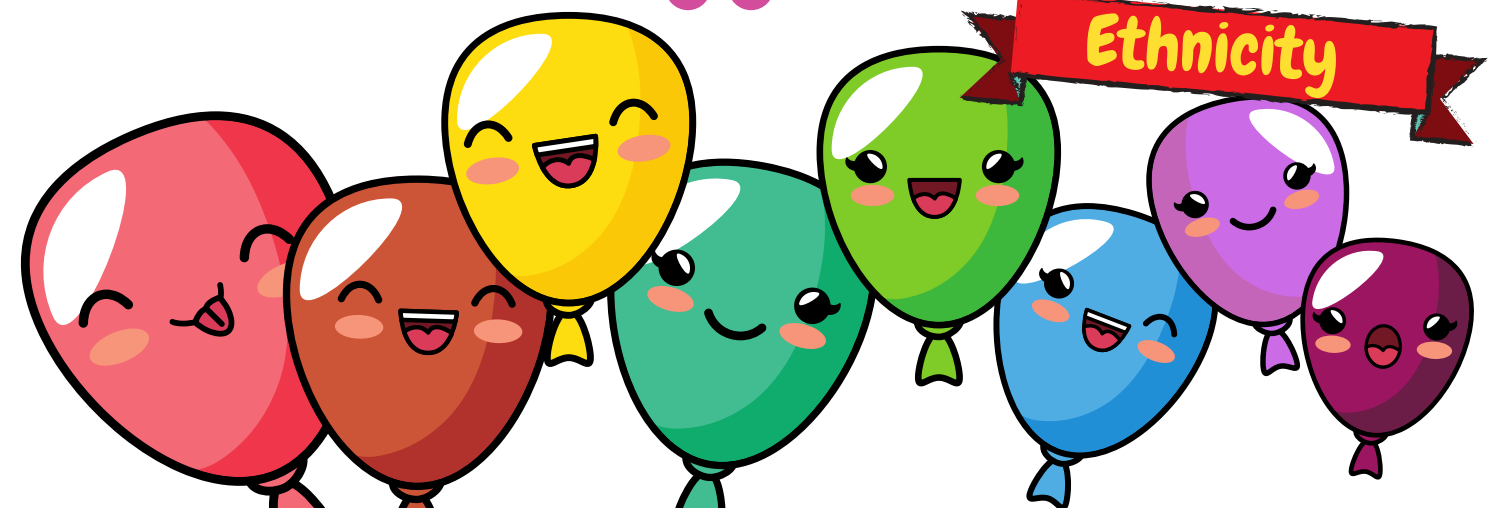
87% are low-income

55% are below poverty line



90% of PATCH clients earn less than the state median household income

Ethnicity



34% White

27% Hawaiian

16% Filipino

14% Asian

4% Black

2% Pacific Islander

2% Other 1% Hispanic